



HYUNDAI

NEW THINKING.
NEW POSSIBILITIES.

SANTAFE 





HIGHER LEVEL OF COMFORT

It no longer makes sense to expect different levels of comfort between sedans and SUVs. A design that features an ergonomic interior layout, sports luxurious quality seats, and ensures a quiet and smooth ride; state-of-the-art convenience features that offer the highest level of comfort; and the versatility of space that only an SUV can provide—the all new Santa Fe has become even more comfortable, making traveling a new favorite pastime and reminding us without words how precious the moments we spend with our family are.



Interior available in black and beige only

The inner space as well as the size and layout of the seats of the Santa Fe have been optimised to make it practical for any situation, whether it is for leisure or business. In particular, the rear seats can be divided into a 4:2:4 ratio, leaving enough seating room all the while allowing large loads. From business to daily family life with children, the Santa fe offers seat variations that are easy to manipulate and extremely versatile, with 40-40-20 split folding seats, making life even fuller.





A PERFECT BLEND OF FUTURISTIC TECHNOLOGIES AND ERGONOMICS

An ergonomic space with an optimised layout of a stack of cutting edge convenience features offers a sense of pleasure that only the person sitting in the driver's seat of the Santa Fe can experience and enjoy.



Navigation & Audio system

The 7 inch smart navigation enables you to conveniently manage diverse driving information and multi-media. You can also appreciate the true sounds of your radio, CDs, and MP3 files through the audio system featuring the Premium Sound System (10 speakers + amplifier). Standard and optional audios are fitted with the Virtual Surround System (6 speakers).

* Available on premium models only







Panoramic sunroof

Santa Fe's panoramic sunroof offers even more openness compared to conventional panoramic sunroofs by eliminating the centre beam of head lining and using motor-driven roller blinds.

* Available on premium models only

Flex steer

Flex Steer enables drivers to choose among three driving modes (Normal/Sport/Comfort) according to their preference. A dedicated switch imbedded in the steering wheel is easy to operate and can be switched while driving or when the vehicle is still.



CONVENIENCES THAT AWAKEN THE PLEASURE OF DRIVING

Savouring the pleasure of driving, snuggled in my comfortable seat, and enjoying the wide open sky. I can even feel the sense of ease of my fellow passenger. The cityscape that I am so familiar with takes on a whole new dimension.



Cluster ioniser

An air-purifying device installed in the cluster removes harmful viruses and odours inside the car and creates a healthy interior by releasing negative ions that keep air clean at all times.

* Available on 4-wheel drive models only



Second seat 4:2:4 folding
The second row rear seat folds in a 4:2:4 ratio to allow even greater efficiency depending on the number of passengers and the luggage size and shape.

SPACE THAT IS LUXURIOUS YET PRACTICAL

A sense of comfort not only in the front but also in the back so that the entire family can enjoy the ride, not to mention a roomy luggage space, and make any journey a relaxing memory to cherish.



Second seat remote folding

Santa Fe's rear seat layout was designed to provide passengers maximum comfort. Its 2nd seat remote folding feature conveniently creates a large luggage space with the activation of a lever.

Luggage space

Generous storage space makes it possible to load large, voluminous items.

Rear centre armrest cup holder

Armrest in the centre of the rear seats has been designed with the comfort of the backseat passengers in mind, and has built-in, pull-out cup holders for increased riding pleasure.



SANTA FE COMFORT

The Santa Fe Comfort comes with generous specification and a host of features that will benefit your driving experience including a low pressure ERG Valve that reduces the Co2 level emissions of your Santa Fe.

Steering & Power

Motor driven power steering with Flex Steer
Leather Steering Wheel and Gear Knob
4 Spoke Multifunction Steering Wheel

- Controls for Speed Limiter, Cruise Control,
- Bluetooth, Radio, CD, iPod, USB, Volume, Flex Steer, and Driver Information System

6 Speed Manual Gear box
Twin Exhaust Pipe (on one side)

Wheels

17 Inch Alloy Wheels
Full Alloy Size Spare Wheel

Lighting

Front and Rear fog lamps
Emergency brake signal
Daytime Running Lights
Rear Spoiler with high mounted Stop Light

Comfort and Style Features

7 Full sized seats
Power windows Auto Safety (One touch up/down), Front and Rear
Electric Lumber support (Driver Only)
Glove box cooler
Reverse Camera
Air Conditioning
Wrap Doors

- stops mud etc being transferred to the drivers or passengers legs when entering and exiting the vehicle

Auto folding mirrors
Welcome and Escort Function

Multimedia

Bluetooth (Hands free with Voice Control function)
Radio with CD, USB, iPod connection (voice control on certain functions, please speak with your dealer)
My Music (now with more memory)

Safety Features

Drivers Airbag, Passenger Airbag
Side and Side Curtain Airbag
Driver's knee airbags

ESP (Electronic Stability Program) VDC (Vehicle Dynamic Control)
Downhill brake assist
Hill Start Assist

Active hood safety system
Burglar Alarm Function
Auto locks

Trailer Stability
Roll over protection
Tow Bar Wiring



SANTA FE EXECUTIVE

Not only does the Santa Fe Executive encompass all the benefits of the Hyundai Santa Fe Comfort model, but it also available in 4 Wheel Drive, 6 Speed Automatic model and includes:

- Full Automatic Temperature Control with Cluster Ionizer
- Leather Seats
- Cornering Lamps
- Roof Rack
- Auto De-fogging System
- Rain Sensors (wipers begin automatically in heavy rain)

SANTA FE PREMIUM

This 4-wheel drive Automatic vehicle is available on special order. It is comprised of the full Santa Fe Executive specifications plus

- 19 Inch Alloy Wheels
- Power Seat (Driver Seat Only)
- Panoramic Sunroof
- Satellite Navigation





Front and rear suspension

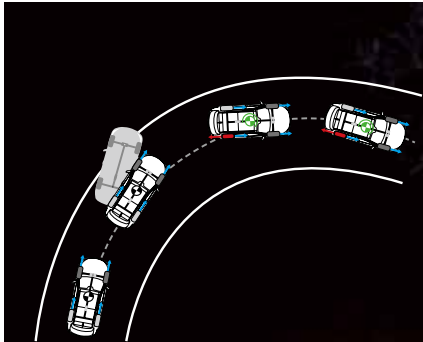
A newly designed McPherson strut front suspension delivers a better ride and greater stability while driving and braking. A multi-link rear suspension makes it possible to create a more spacious rear compartment than in-wheel rear suspension cars, delivering a more comfortable ride.

6-speed transmissions

The step-change performance improvements in acceleration, durability, and efficiency of Santa Fe's six-speed automatic and manual transmissions enable drivers to simultaneously experience the excitement and convenience of driving.

WIN-WIN STRATEGY OF PERFORMANCE AND FUEL EFFICIENCY

Superb power performance, the most advanced driving features that ensure safety, and an efficient transmission – driving the Santa Fe is always an exceptional experience, under any weather or road condition.



ESC / 4WD Assistance Control

ESC / 4WD Assistance Control is a function that minimises the risk of running off course in the event of entering a curve at high speeds. 4WD distributes traction to the rear wheels while ESC exerts braking in the inner rear wheel to help control the vehicle in advance, at a stage before conventional ESC systems would activate. They deliver more stable driving performance by helping drivers control their vehicle at will and improving driving agility.



CONSIDERATIONS THAT PUT FAMILY FIRST

Highly rigid car body and state-of-the-art airbag system, a wide range of safety features that have been fine-tuned to come closer to perfection.



Downhill brake control

DBC is a system that automatically controls Santa Fe's speed on steep declines to control braking. It is one of Santa Fe's features that ensure stable driving under a variety of road conditions.



7 airbag system & rollover sensor

Lower pressure deployment airbags prevent secondary injuries that can occur during airbag activation. The airbag system consists of side and curtain airbags, in addition to a driver-side knee airbag to minimise driver injuries. Rollover sensors detect vehicle rollovers in advance and activate the airbags to ensure safety.





*Body colour and chrome radiator grille as standard

DRAWING ON STYLE AND APPEAL

7.5JX19 Alloy wheels*

Large alloy wheels with a luxurious design enhance Santa Fe's dynamic driving as well as refined image.

*Available on premium models only

Fog lamps and cornering lamps*

Fog lamps enhance visibility in the event of heavy fog or rain. Cornering lamps enhance lateral vision when turning to improve driving safety.

*Available on executive model only

High-mounted stop lamp

A high-mounted stop lamp integrated into the tail-gate, with bright red LEDs, increases your visibility to traffic behind when you apply the brakes.

Roof rail*

The roof rail adds the final touch to the exterior design to complete the dynamism and sophistication of an urban SUV.

Twin muffler

The dual exhaust pipe design imparts a sharply differentiated high performance image that conveys a European-style sportiness.

Outside mirrors

Built-in heat coils improve visibility even in bad weather. Power folding makes operation convenient. Moreover, puddle lamps deliver side repeater and welcome features for excellent design and functionality.



7.0JX17 Alloy wheels



7.5JX19 Alloy wheels





Premium sound system (only with Navigation)

*Available on executive and premium model 4-wheel drive only

DRAWING ON FUNCTION AND APPEAL

IMS (Integrated Memory System)*

An Integrated Memory System allows to recall up to two profiles for automatic seat and outside mirrors adjustment.

*Available on premium models only

USB & AUX input jacks

USB and AUX input jacks enable convenient listening of MP3 files as well as other formatted music through Santa Fe's high performance audio system.

Solar glass

Solar glass effectively blocks UV rays from passengers and prevents the discoloration of the interior.

Glove box cooling

The glove box cooling area is large enough to store and refrigerate drinks during hot weather.

12-way power adjustable driver's seat*

The driver's seat can be optimised in eight different positions on top of which the lumbar support can also be adjusted in four different ways to provide greater driving comfort.

*Available on premium models only



INTERIOR TRIMS



Black one tone > Seat material

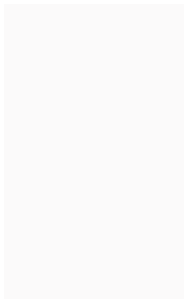


Beige two tone > Seat material



*Leather interior available on 4-wheel drive models only

EXTERIOR COLOURS



Creamy white
NCW



Sleek silver
N3S



Titanium silver
T6S



Arabian mocha
N8N



Phantom black
NKA

SPECIFICATIONS

Engine					
Type		R 2.2 VGT			
Displacement (cc)		2,199			
Max. Power (ps / rpm)		197 / 3,800			
Max. Torque (kg.m / rpm)	M/T	43.0 / 1,800 ~ 2,500			
	A/T	44.5 / 1,800 ~ 2,500			
Suspension					
Type	Front / Rear	McPherson strut type / Multi-link type			
Shock absorber	Front / Rear	Strut type (Gas) / Shock absorber type (Gas)			
Brakes					
General		Dual-diagonal, Splite-circuit, Power-assisted braking system with EBD			
Front brake type	2WD / 4WD	φ320 ventilated disc, Floating-caliper brakes with Pads wear warning devices			
Rear brake type	with ABS	φ302(2WD/4WD) solid disc, Floating caliper brakes with wear warning device / φ190 (2WD/4WD) high torque parking brake			
ABS		4-wheel electronic, 4-sensor, 4-channel electronic brake distribution, Brake torque distribution system (EBD)			
Drive train					
Type		Manual		Automatic	
		R 2.2 VGT		R 2.2 VGT	
CO ₂ level (g/km)	2WD	147		-	
	4WD	149		175	
100 KPH (km/ℓ)	2WD	17.8		-	
	4WD	17.5		16.0	
Fuel tank capacity (litre)		64			
Transmission		6 speed			
4WD drive system		Active on-demand 4WD			

- The above values are results from internal testing and could be changed after validation.
- Some of the equipment illustrated or described in this catalogue may not be supplied as standard equipment and may be available at extra cost.
- Hyundai Cars Ireland reserves the right to change specifications and equipment without prior notice.
- The colour plates shown may vary slightly from the actual colours due to the limitations of the printing process.
- Please consult your dealer for full information and availability on colours and trims.

DIMENSIONS

Unit : mm



*Wheel tread
 17 inch (F/R) : 1,633/1,644
 18/19 inch (F/R) : 1,628/1,639



NEW THINKING. NEW POSSIBILITIES.

People's expectation toward individual mobility requires more than just a convenient means of transportation. The old understanding of cars has become outdated. A car represents individuals' lifestyles, and has become an integral part of their lives. At the same time, the automobile industry has experienced seismic change.

Hyundai Motor Company has grown rapidly to become one of the largest automakers, backed by world class production capability and superior quality. We have now reached a point where we need a qualitative approach to bring bigger ideas and relevant solutions to our customers. This is an opportunity to move forward and we have developed a new brand slogan that encapsulates our willingness to take a big leap. Led by our new slogan and the new thinking underlying it, we will become a company that keeps challenging itself to unlock new possibilities for people and the planet.